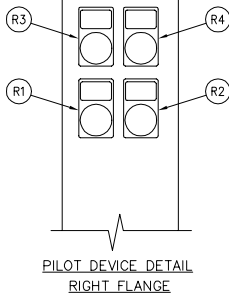
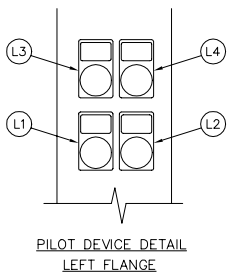


PILOT DEVICE LEGEND
LEFT FLANGE

- L1. SWITCH IN EMERGENCY LIGHT
- L2. PUSH TO TEST BUTTON
- L3. SWITCH IN NORMAL LIGHT
- L4. EMERGENCY ISO SW. OPEN LIGHT

PILOT DEVICE LEGEND
RIGHT FLANGE

- R1. START PUSH BUTTON
- R2. STOP PUSH BUTTON
- R3. POWER ON LIGHT
- R4. PHASE REVERSAL LIGHT



VOLTAGE	HORSEPOWER
200V	200-250 HP.
208V	200-250 HP.
230V	250 HP.
380V, 415V	350 HP.
460V	500 HP.

NOTES:
ALL DIMENSIONS IN INCHES AND MILLIMETERS ([])

	DRAWN	SR	2-10-98	METRON, INC. DENVER, CO.	
	CHECK	KH	2-21-98		
	APPD	X.S.	2-21-98		
ENCLOSURE DIMENSIONS MODEL M450 WITH TRANSFER SWITCH 135.5" CABINET, 18" DEEP ELECTRIC FIRE PUMP CONTROLLER				CD32959A	
SCALE				N.T.S.	SHEET 1 OF 1